

Scorpion® Trailer Attenuator



Features

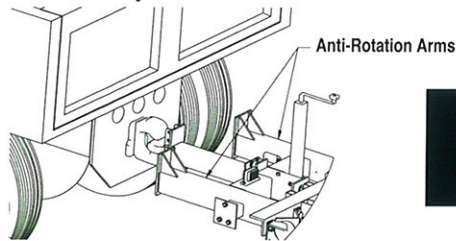
- NCHRP 350 tested and accepted for all mandatory and optional offset and angled impacts
- Only Trailer Attenuator to be tested and accepted with a 10,000 lb host vehicle
- Infinite weight tested and accepted allows the Scorpion Trailer to be used on heavy host vehicles with no upper weight limit
- Single point attachment to standard 20 Ton (minimum) rated pintle hook is quick and easy
- Telescoping Anti-Rotational System (TARS™) minimizes Scorpion Trailer rotation during angled and offset impacts, preventing trailer separation from host vehicle
- Requires little or no modification or additional mounting hardware to host vehicle
- The Scorpion's proven modular design crushes in progressive stages allowing quick and economical replacement of damaged parts
- The unique curved design gives full width protection to the back of the host vehicle and protects the "coffin corners" of the truck
- Rear axle placement improves trailer stability and prevents the tail from "bottoming out" on driveways or uneven surfaces
- Optional Arrow or Message Board can easily be attached to Scorpion Trailer Attenuator

**TraFFix
Devices Inc.**



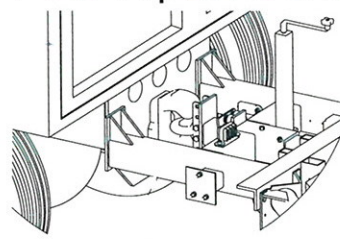
Telescoping Anti-Rotation System (TARS™)

Pre-Impact Condition



**Scorpion®
Trailer Attenuator
10002 Series**

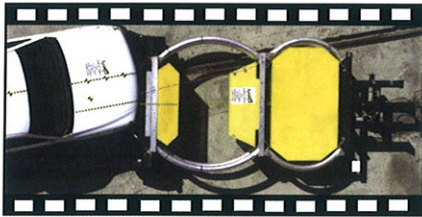
Post-Impact Condition



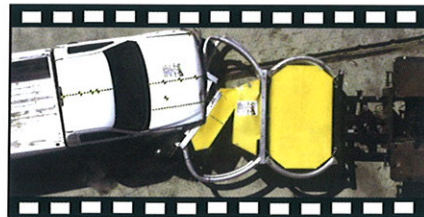
The Scorpion Trailer attaches directly to the pintle hook. It does not require additional installation, or truck modification, beyond standard factory installed pintle hook and 1/2" steel frame plate.

Upon impact, two heavy duty anti-rotation arms are driven against the frame plate, preventing angular rotation of the Scorpion Trailer during an accident.

TL-3; 3-53 Offset Angled Test — 4,500 lb vehicle impacts 20,000 lb host vehicle at 62.5 mph (100 kph)



Beginning of impact

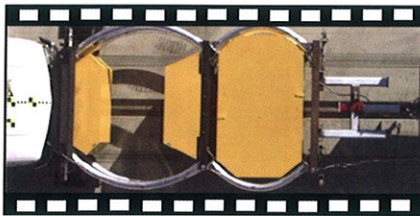


Mid-point of impact

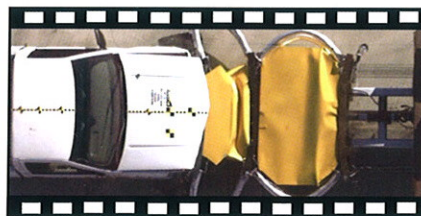


End of impact

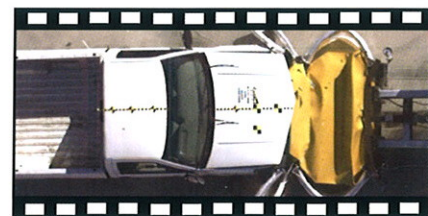
TL-3; 3-51m Inline Test — 4,500 lb vehicle impacts 10,000 lb host vehicle at 62.5 mph (100 kph)



Beginning of impact



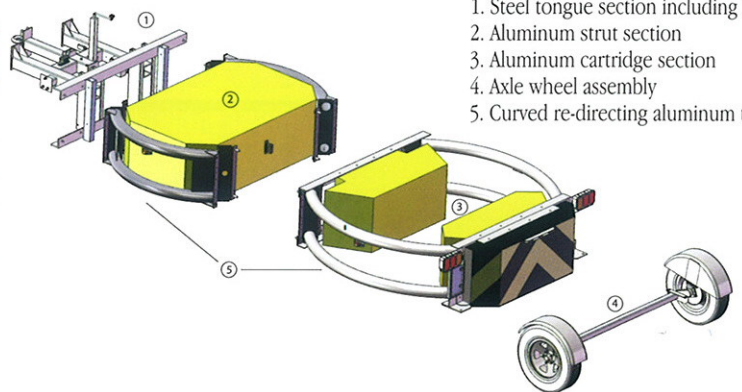
Mid-point of impact



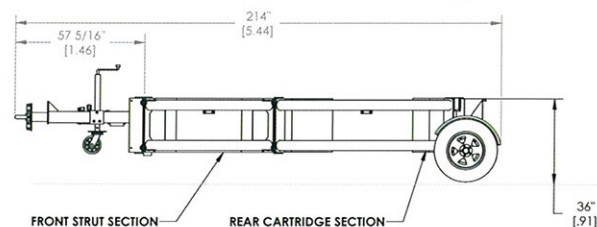
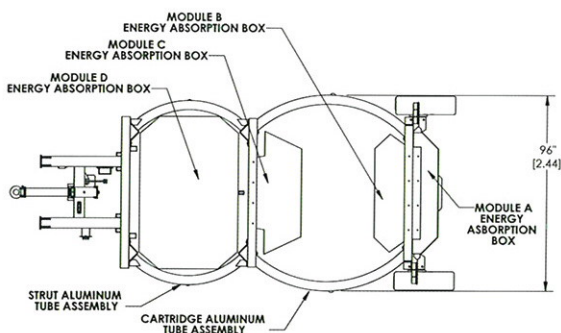
End of impact

Specifications

	TL2	TL3-STD	TL3-Euro
• Length	13' 0" (3.96m)	17' 10" (5.44m)	17' 10" (5.44m)
• Width	96" (2.44m)	96" (2.44m)	96" (2.44m)
• Height	36" (.91m)	36" (.91m)	36 (.91m)
• Weight	1240 lbs (562kg)	1730 lbs (785kg)	1541lb (700kg)



1. Steel tongue section including TARS™
2. Aluminum strut section
3. Aluminum cartridge section
4. Axle wheel assembly
5. Curved re-directing aluminum tubes



© Copyright January, 2007 Traffix Devices, Inc. Traffix® and Scorpion® are trademarks of Traffix Devices, Inc. U.S. Patent No. 6,024,341 and 6,581,992 B1 Licensed Under U.S. Patents 6,092,949 and 6,481,920



160 Avenida La Pata, San Clemente, CA 92673
(949) 361-5663 FAX (949) 361-9205
www.traffixdevices.com

Distributed by: