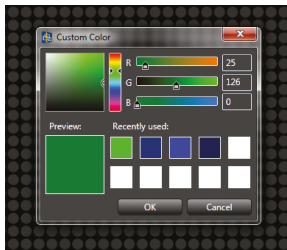
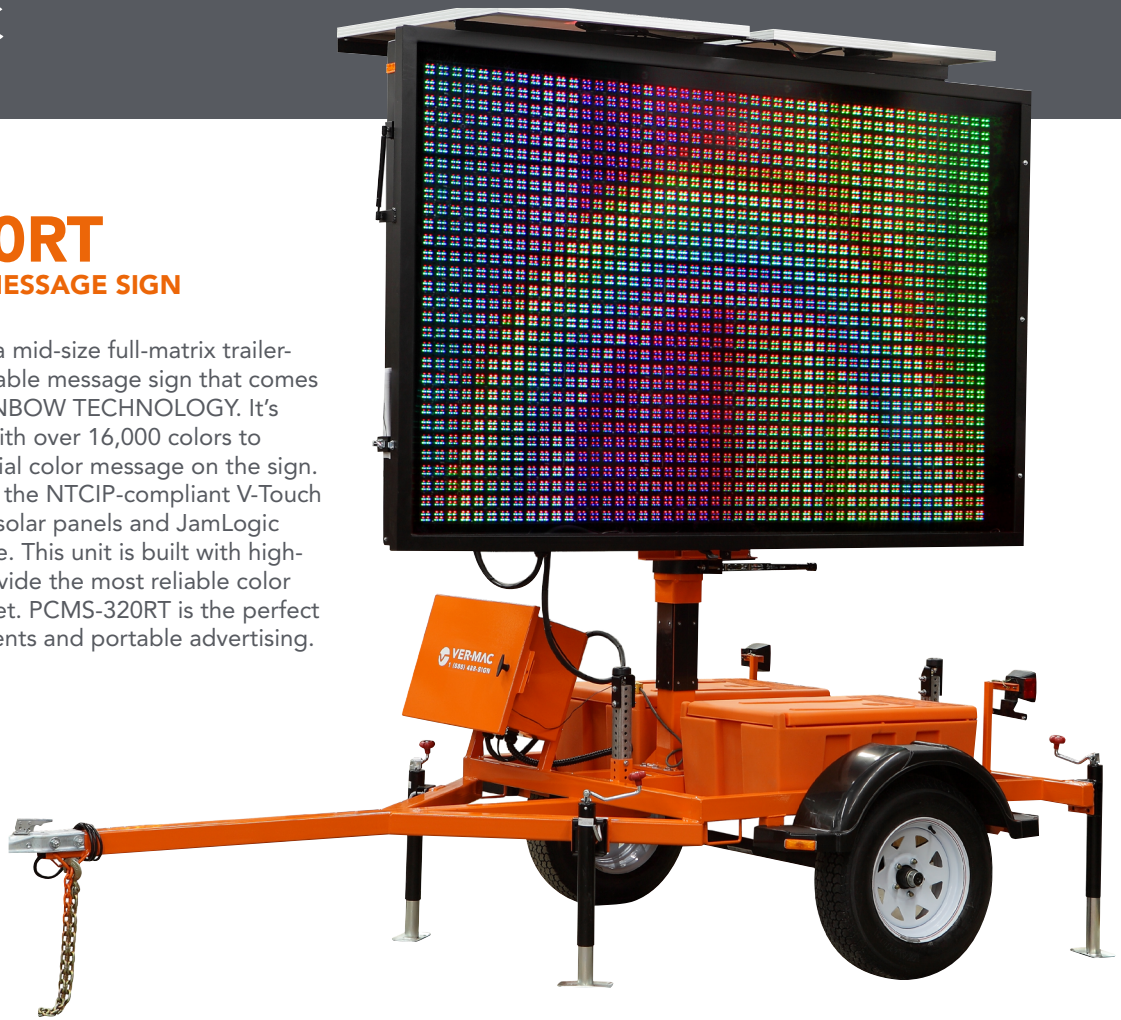


## PCMS-320RT TRAILER-MOUNTED MESSAGE SIGN

Ver-Mac's PCMS-320RT is a mid-size full-matrix trailer-mounted portable changeable message sign that comes with the RGB COLOR RAINBOW TECHNOLOGY. It's the industry's first PCMS with over 16,000 colors to design or create your special color message on the sign. PCMS-320RT also features the NTCIP-compliant V-Touch controller, Tilt-and-Rotate solar panels and JamLogic fleet management software. This unit is built with high-quality construction to provide the most reliable color message sign on the market. PCMS-320RT is the perfect model to use in special events and portable advertising.



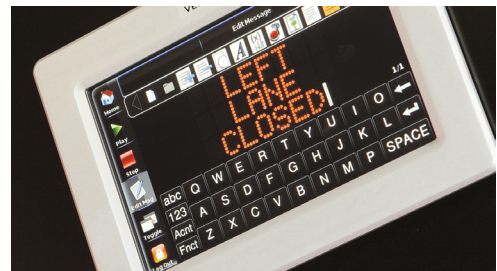
### RAINBOW TECHNOLOGY

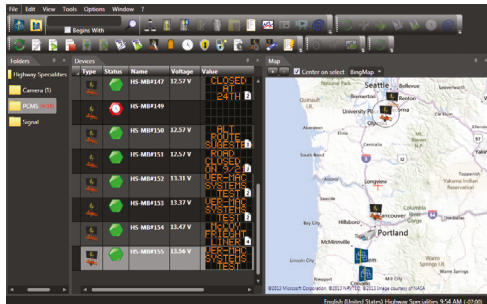
Ver-Mac's Rainbow Technology creates over 16,000 colors that can be displayed in a message or in a graphic design. The red, green, blue (RGB) hues are mixed together to create colors. Choose from a standard list or create your own by utilizing the color wheel. The sky's the limit with Ver-Mac's Rainbow Technology!

### V-TOUCH CONTROLLER

Ver-Mac's PCMS-320RT comes with our innovative NTCIP-compliant V-Touch controller, the industry's most functional and easy-to-use controller!

- **NTCIP compliant**
- **Easy-to-read** – 7-inch (178 mm) color LCD pressure-sensitive display screen
- **User-friendly** – one-click icon-based menu items
- **Time-saving** – create your own library of messages
- **Simple to operate** – the intuitive point-n-go icons ensure quick and easy commands to display or edit messages
- **Additional functionalities** – scheduling, sign diagnostics, pin-protected security, and much more





### JAMLOGIC® FLEET MANAGEMENT SOFTWARE

Equip the PCMS-320RT with Ver-Mac's high-speed modem with GPS and maximize your productivity, efficiency and profitability all remotely from your office or home! The JamLogic software is FREE and you get all the updates at no charge!

- Monitor, maintain and manage your signs from any PC, laptop, tablet or smartphone
- View your equipment in a list and GPS map view
- Change a message on one or more signs simultaneously with a simple click
- View your messages and battery voltages
- Group your signs in folders (by customer, location, project... you choose!)
- Receive e-mail or text alerts – optional (low battery cellular failure, etc.)

### POWER SUPPLY CONFIGURATION

- **TILT-AND-ROTATE SOLAR PANELS** – Panels tilt to a 45-degree angle to provide maximum solar recharging during all four seasons.
- Various configurations of solar panels and batteries are available to meet your needs.

### HIGH-QUALITY CONSTRUCTION

- **Powder coating superior finish** – impact, humidity, salt spray and rust resistant
- **4 leveling jacks** – for stabilization and easy transportation
- **Electro-hydraulic lift mechanism** – for quick and effortless deployment
- **Heavy-duty plastic fenders** – for durability and easy replacement
- **Plastic battery boxes** – to minimize battery corrosion
- **Lockable control box** – for security
- **2-in. (51 mm) coupler or 3-in. (76 mm) pintle eye** – for easy towing

### SEGMENTS

- Special events / advertising
- City and county
- Law enforcement

### DISPLAY

- Display panel: 66 in. x 104 in. (1680 mm x 2648 mm)
- Rainbow Technology (16,000 colors to be displayed)
- Full matrix of 30 x 48 pixels
- 12 LEDs per pixel (4 red, 4 green, 4 blue)
- Up to 3 lines of 8 characters per line
- Default character: 5 x 7 pixel of 13 in. (330 mm)
- Display sign rotates 360 degrees for perfect setting
- Plug-and-play display modules for simplified maintenance

### DIMENSIONS AND WEIGHTS

- Overall length: 151 in. (3829 mm)
- Overall width: 83 in. (2096 mm)
- Traveling height: 112 in. (2845 mm)
- Operating height: 185 in. (4705 mm)
- Axle/suspension: 3,500 lb (1588 kg)
- Weight (approx.): 2,235 lb (1014 kg)

### OPTIONS

- Battery charger
- Tongue wheel jack
- Radar and data logger

Other options are available to meet your needs.

- 1-year warranty on complete trailers
- 2-year warranty on electronics manufactured Ver-Mac

YOUR LOCAL DISTRIBUTOR

